



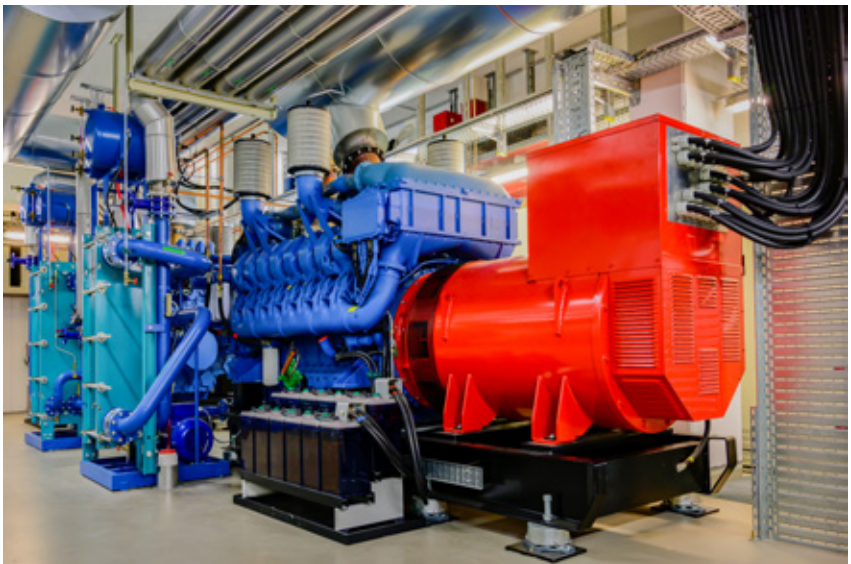
Data Center Solutions

Expertise for your critical infrastructure:

- Leased/owned
- Colocation
- Edge
- Point of presence (POP)
- Adjacent critical environments
- Supporting infrastructure + accessory buildings

Multidisciplinary capabilities for turnkey new-builds, retrofits, + upgrades

Audubon knows the critical role played by **data centers** in connecting resources. We also know our customers see the most value when their data centers operate at peak performance and uphold service-level agreements. With a sharp focus on speed, cost, energy-efficiency, security, and reliability, Audubon brings turnkey design-build solutions to data-center operators across industries.



Secure infrastructure. 24/7/365 uptime. Safe operations.

For planning, building, upgrading, or retrofitting your data center, Audubon serves as your single point of contact, from initial concept to final handoff. With in-house engineers, project managers, construction managers, fabricators, surveyors, and more, Audubon meets the unique objectives of each project we undertake with a fully custom, results-oriented solution. Our multidisciplinary services combine advanced technology, domain proficiency, and optimized processes to ensure critical facilities maintain secure infrastructure, 24/7/365 uptime, and safe operations.

As a full [engineering](#), [procurement](#), [construction](#) (EPC), [fabrication](#), and [field](#) services provider, Audubon prioritizes safety, quality, and agility—always working to find sustainable solutions for our clients' challenges. With decades of industry experience and a proven record of project excellence, we have the deep, diverse expertise to meet your data-center goals while keeping costs and timelines on track:

- Project management
- Construction management
- Procurement + supply chain
- Fabrication
- Feasibility + site assessment
- Commissioning
- Electrical-mechanical-structural engineering
- Control system design
- Fire + safety system design
- Owner's engineering

